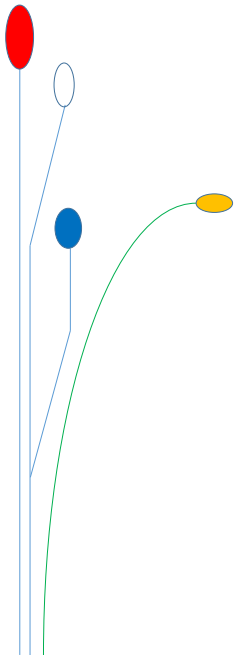
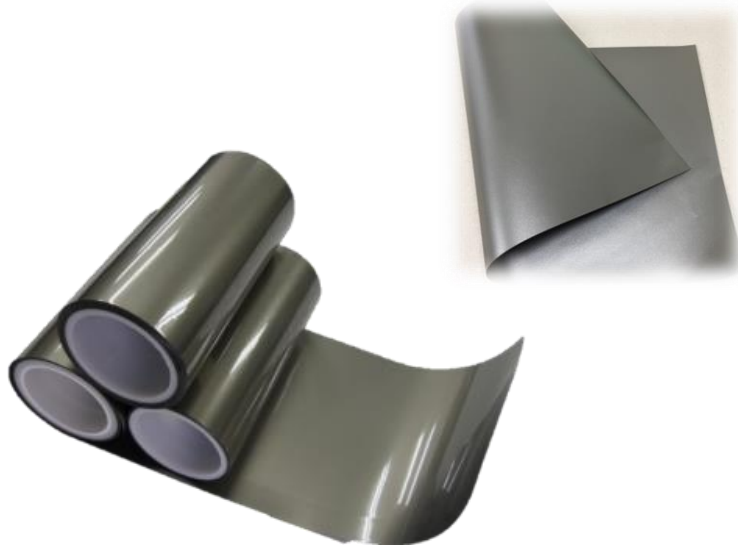


EMI Absorber Sheet

(Flexible Magnetic Metal Sheet)



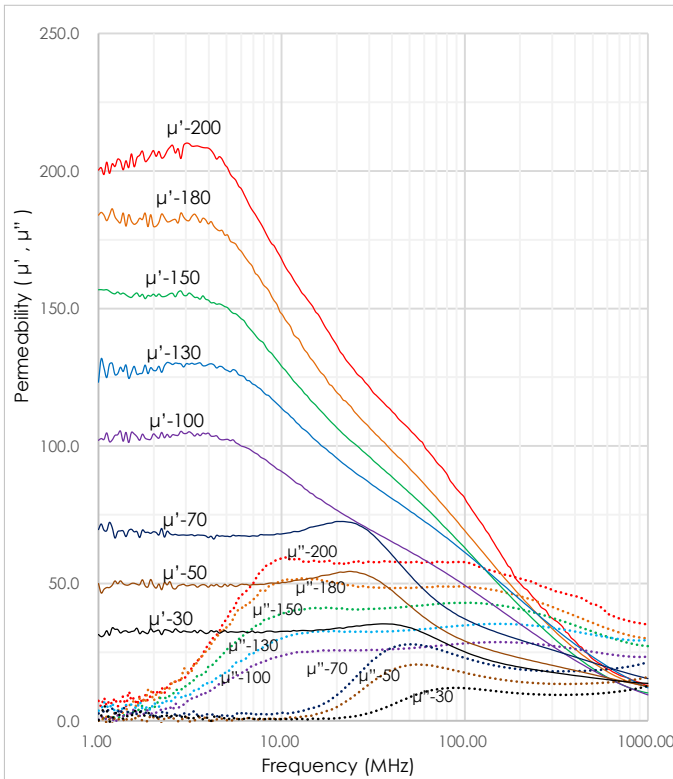
Product Data Sheet	Product Model No.
	SV-ASF* / SV-ASU*

EMI Absorber Sheet

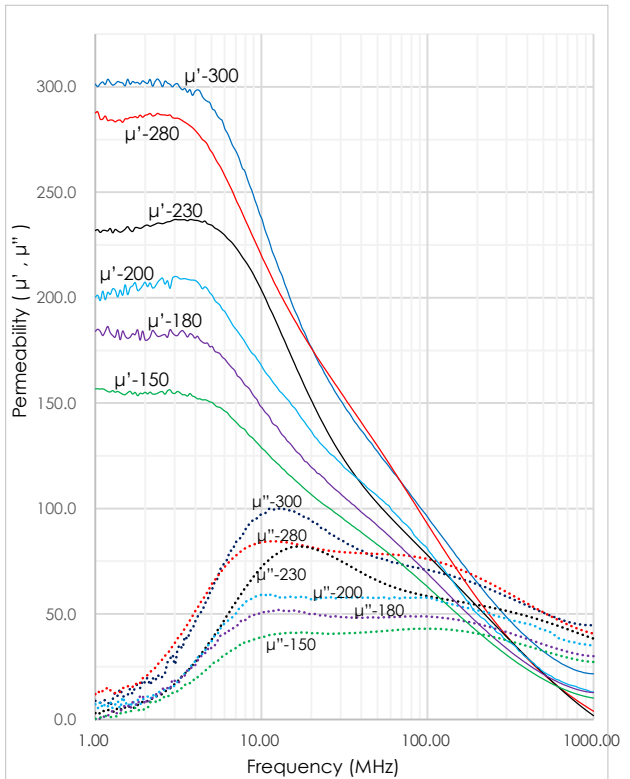
❖ Product Properties

Properties	Unit	Test Method	Characteristic Value	
			SV-ASF Model	SV-ASU Model
Frequency (MHz)	-	-	1 MHz ~ 3 GHz	
Thickness(*)	μm	-	25 ~ 200	25 ~ 500
Standard dimension	-	Roll Type	Width:1,000mm / Length:50~100m	
		Sheet Type	200mm*300mm / 250mm*400mm	
Permeability (μ')	at 1MHz	-	10 ~ 200	10 ~ 300
Use Temp	°C	-	-50 ~ 200	-40 ~ 150
Hardness	-	Shore A	80	90
Specific Gravity	-	-	3.6	4.2
Solder resistance	-	300°C/10sec	Pass	Pass
Neutral Salt Spray Test	-	NaCl5%/72hr	Pass	Pass

SV-ASF Model



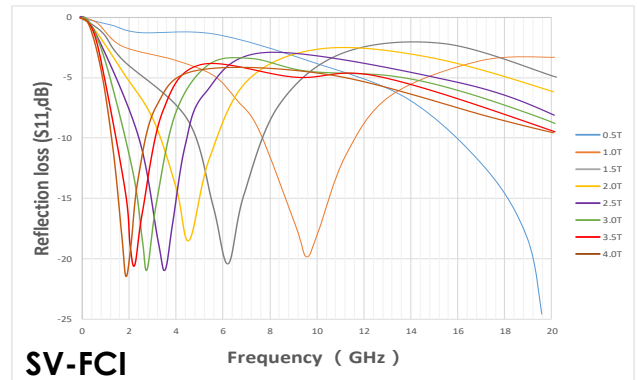
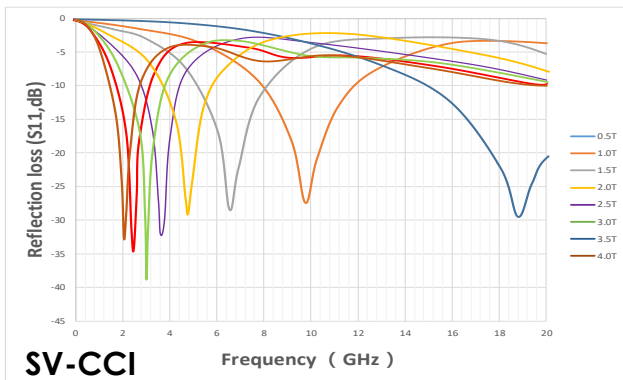
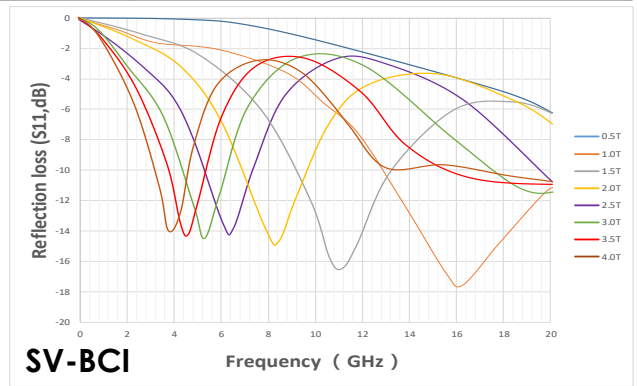
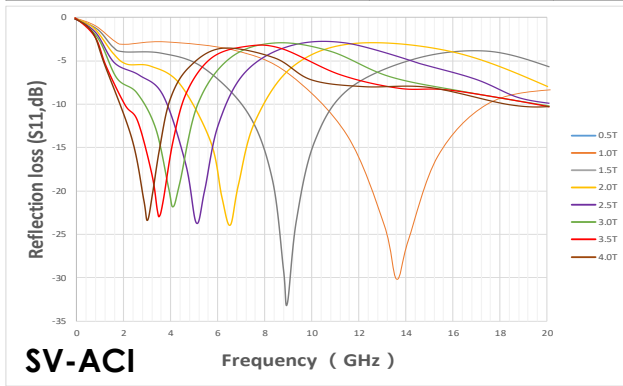
SV-ASU Model



Microwave Absorber Sheet

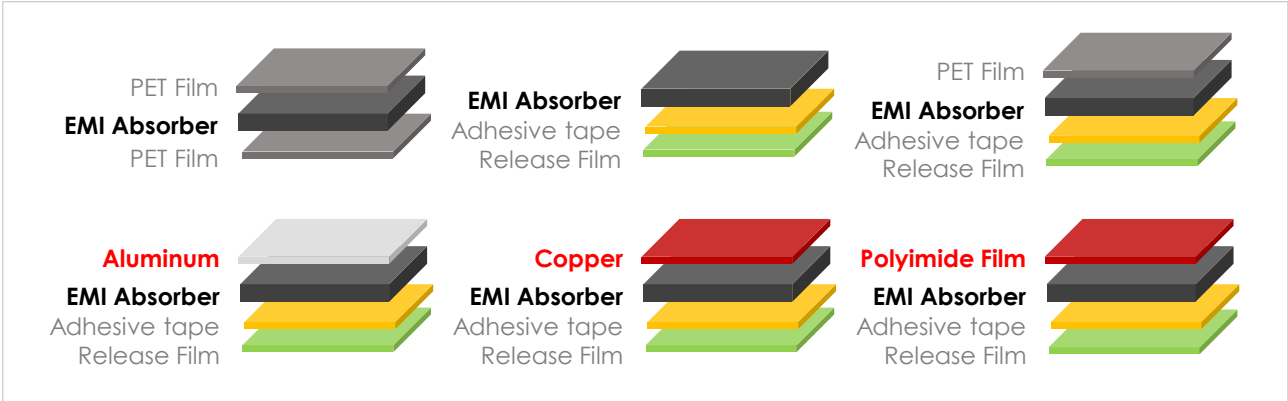
❖ Product Properties

Properties	Unit	Test Method	Value
Color	-	Visual	Dark gray
Frequency range	-	-	1 GHz ~ 40GHz
Standard thickness	mm	-	0.1 ~ 10
Standard dimension	-	-	210 * 300 (Sheet form and die-cut parts)
Use temp.	°C	-	-50 ~ 180
Hardness	-	Shore A	70
Specific gravity	g/cm ³	-	3.3
Tensile strength	Kgf/cm ²	-	> 30
Thermal conductivity	W/mk	ASTM D5470	0.5 (Thickness : 1mm)
Solder resistance	-	300°C/10sec	Pass
Chemical resistance	-	No change	Pass

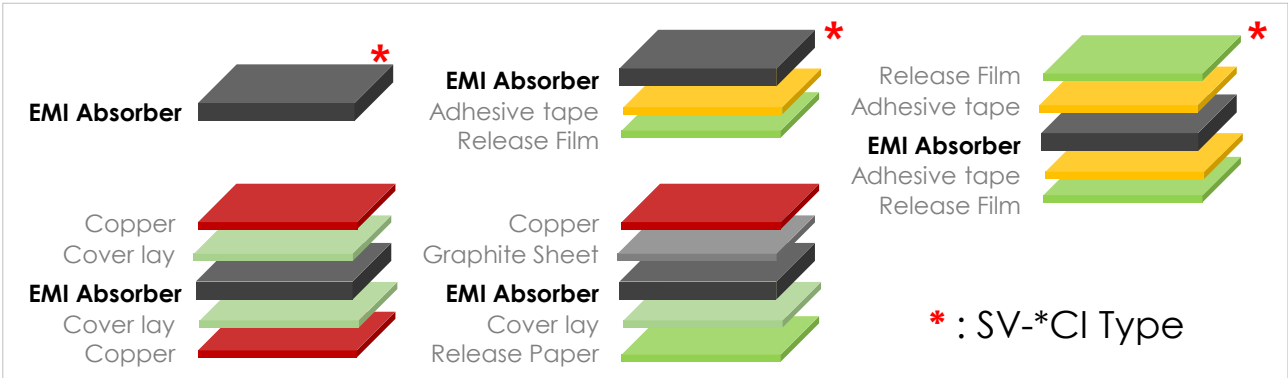


EMI Absorber Sheet

▶ SV-ASF Type



▶ SV-ASU & SV-*CI Type



❖ Product Image



❖ Applications



www.siliconevalley.co.kr
(siliconevalley@siliconevalley.co.kr)

34, Gongdan 4-gil, Gimcheon-si, Gyeongsangbuk-do, 39537 Korea
TEL : +82-54-437-0878
FAX: +82-54-437-0879

